

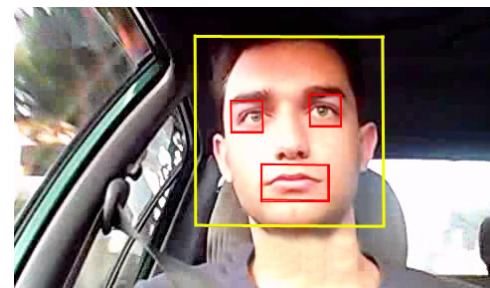
High Performance - Compact size

The TRAX-4 mobile platform is designed with Intel® Quad-core for high system performance and quality graphics capability.

It's future proof open framework makes it easy to add and upgrade future third party applications and functionality. One computer platform simplifies installation and maintenance; increases efficiency and safety and reduces "technology clutter".

The TRAX-4 platform supports critical safety, equipment diagnostics, driver fatigue, communication, fleet management and other mobile computer solutions

- Small size - fits nearly anywhere
- M-12 connectors for low cost cabling
- Open Architecture - run multiple programs simultaneously
- Intel Quad core with native virtualization support
- High video performance - DirectX, Open GL, Open CL
- Diverse antenna connectors
- Wireless - GPS, WiFi, Cellular
- Made in the USA



SPECIFICATIONS

Processor

- Intel Quad-Core 3845 CPU, 1.91 GHz
 - 2MB L2 Cache
 - 64-bit Capable
 - Virtualization Support
 - ACPI 5.0 Support

Memory

- 4 GB DDR3-1333

Graphics

- DirectX 11, OpenGL 3.0, OpenCL 1.2
- 542 MHz Graphics Core, 792 MHz Burst with Four Execution Units
- Hardware Accelerated Media Encode and Decode
- VGA up to 2560x1600 (WQXGA) resolution
Compatible with K-10 display

Storage

- Integrated 32GB Solid State Disk with ECC
 - Power Interrupt Data Protection
 - SMART Command-based Alerts
 - Security erase
- Support for Larger Capacities

GPS

- 72 Channel Engine (included)
- Multi-GNSS
 - GPS, GLONASS, Galileo, QZSS, SBAS
- Fast Acquisition and High Accuracy

External I/O

- Two USB 2.0 Ports
- Two RS-232 COM Ports, 4 wire
- Ethernet Port
 - One 10/100/1000 Base-T port
- Audio
 - Line in and line out
- Digital I/O
 - Two inputs and one output with Full operating voltage range
- VGA with resolution to 2560x1600
- SMA connector for GPS
- 4x SMA for wireless options
- Status LEDs

CAN BUS

- Isolated - ISO 11898-2

Wireless Options

- 802.11b/g/n Long Range WiFi
- GSM/GPRS/LTE Cellular support

Operating System Compatibility

- Windows Embedded Standard 7
- Windows Embedded Standard 10
- Linux Ubuntu

Security & Manageability

- Trusted Platform Module (TPM)

Power Supply

- 9-36 VDC input voltage (10-36 VDC continuous)
- Protection for Load Dump, Reverse Voltage, Brown Out, and Transients

Mechanical

- Size: 157 D x 237 W x 56 H mm
(6.2" x 9.3" x 2.2")
- Weight: 3.5 kg (7.7 lbs)

Environmental

- Operational Temperature: -40°C to 71°C per MIL-STD 810G, Method 501.5 and 502.5
- Non-Operational Temperature: -40°C to 80°C per MIL-STD 810G, Method 503.5
- Humidity: 5-95% Non-condensing
- IP65 Dust/Moisture Rating
- Vibration: MIL-STD 810F, Method 514.5C-3
- Shock: MIL-STD 810F, Method 516.5, 20g/11ms
- Fan-less Operation

Regulatory/EMC

- FCC Class A
- CE Mark
- RoHS Compliant

Applications

- Public Transit Systems
- Construction Vehicles
- Military
- Remote Monitoring & Control
- Mining
- Trucking
- Oil & Gas

ORDERING INFORMATION

- #9908R- TRAX-4 with 1.91 GHz, 4 GB DRAM, 32 GB SSD
- #9337360R - Dual band WiFi
- #7501707R - 1M power cable
- #9339907 - Windows Embedded Standard 7
- #9337550 - Windows Embedded Standard P-10
- #9337500 - Linux Ubuntu

**Call Octagon Sales for help
in optimizing a solution
+1 303.430.1500**

Specifications subject to change without notice